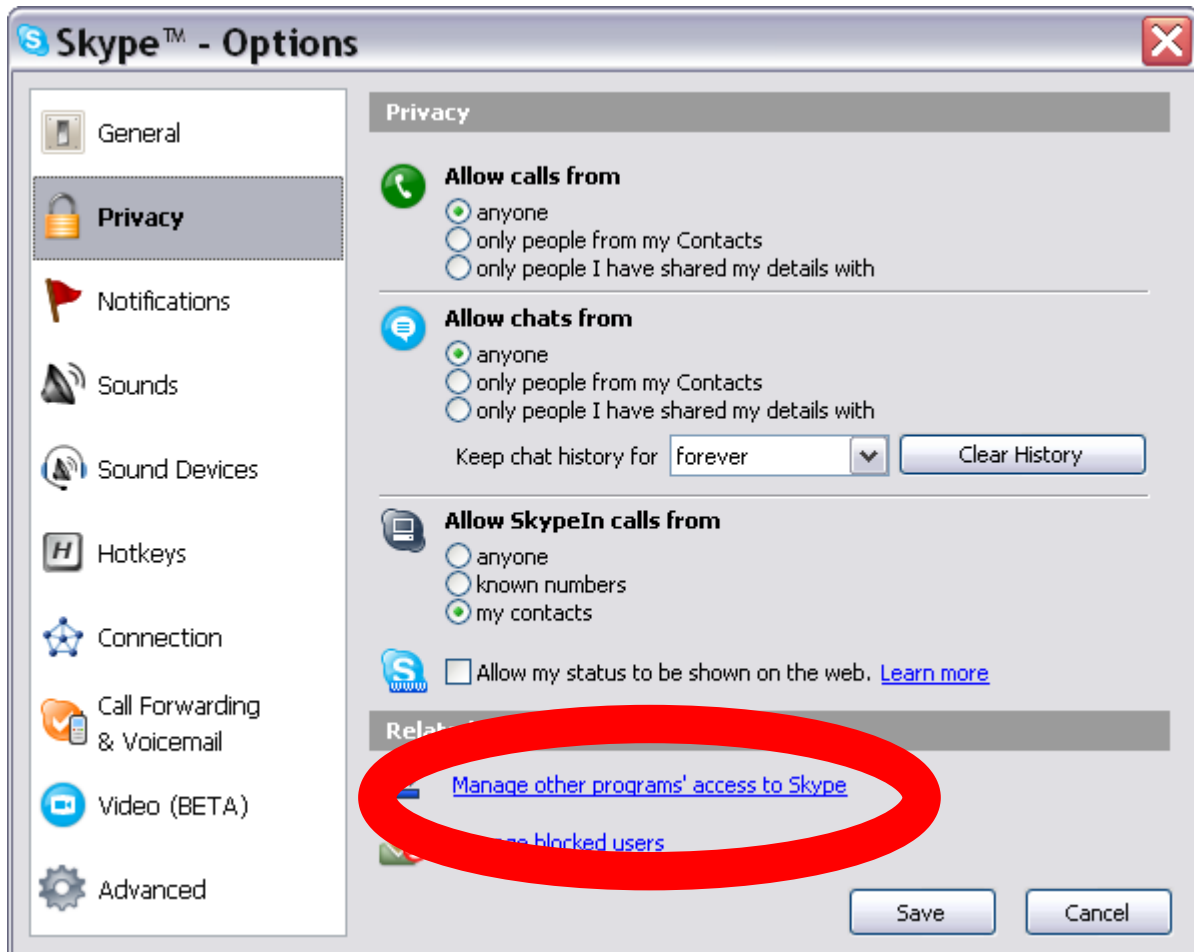


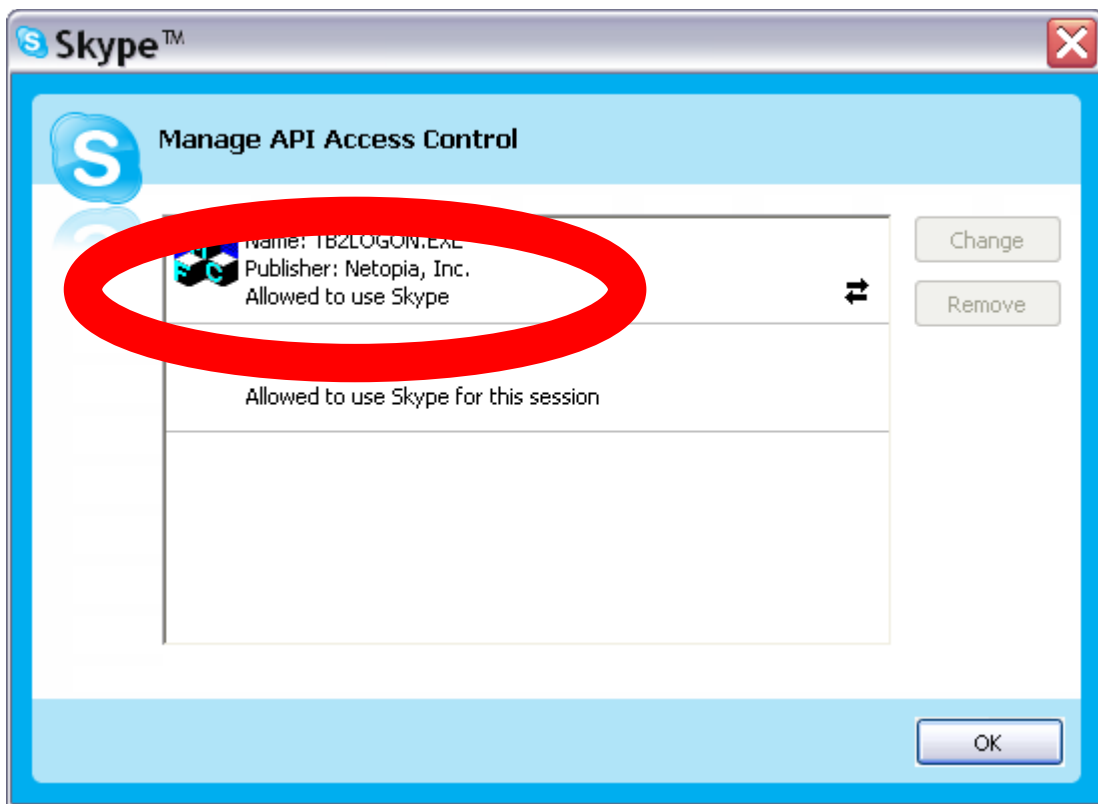
Configuring Timbuktu Pro for Windows with Skype

Timbuktu Pro must be granted permission to use the Skype API. This is normally done through a dialog that Skype generates on your PC when Timbuktu Pro first launches. In some cases the dialog does not launch and you must manually configure Skype.

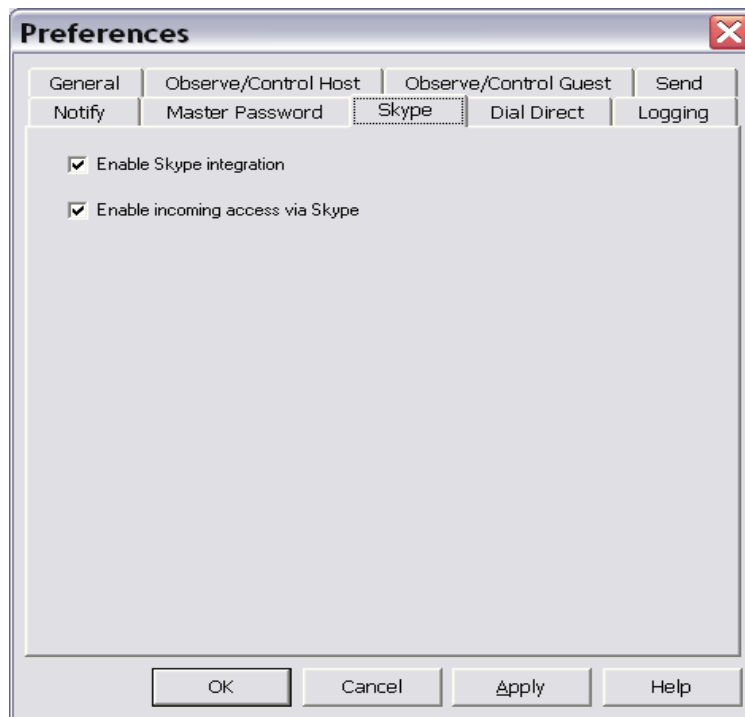
1. Open your Skype.
2. Select Tools from the Menu Bar and then click on Options.



3. Select the Privacy link on the left.
4. At the bottom of the dialog click on the Manage other programs' access to Skype.
5. A new dialog will open.



6. Ensure that the Timbuktu Pro Program listed above is allowed to use Skype. If it is not permitted to use Skype, click on the Change button to allow Timbuktu Pro to use Skype.
7. You may also need to adjust the Timbuktu Pro preferences to enable incoming connections to use Skype.



8. Make sure that both Skype check boxes are checked.