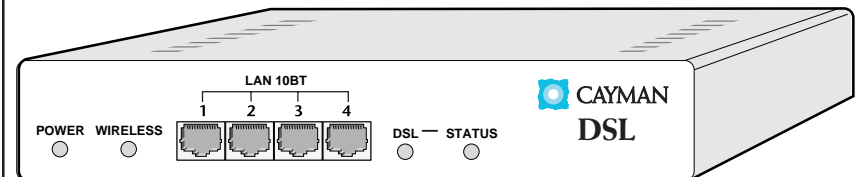




CAYMAN

***Getting Started
with the
Cayman 3220-H-W11***



CAYMAN

Cayman Systems
296 Concord Road
Billerica, MA 01821
978 262-1700
FAX: 978 667-4404
support@cayman.com
<http://www.cayman.com/>

October 2000
12419-1 Rev A

For More Information

Cayman Systems is a registered trademark of Cayman Systems, Inc. SWIFT-IP, SafetyNet, Zero Configuration, and the Cayman Systems logo are trademarks of Cayman Systems, Inc.

UNIX is a registered trademark of UNIX System Laboratories, Inc. Ethernet is a registered trademark of Xerox Corporation. Microsoft and Windows are registered trademarks of Microsoft Corporation.

All other trademarks are the property of their respective owners. Mention of third-party products is for informational purposes only and constitutes neither an endorsement nor a recommendation. Cayman assumes no responsibility with regard to the performance or use of these products.

Portions of this software copyright 1988, 1991 by Carnegie Mellon University. All rights reserved. Permission to use, copy, modify, and distribute this software and its documentation for any purpose and without fee is hereby granted, provided that the above copyright notice and this permission notice appear in supporting documentation, and that the name of Carnegie Mellon University not be used in advertising or publicity pertaining to distribution of the software without specific, written prior permission.

CARNEGIE MELLON UNIVERSITY DISCLAIMS ALL WARRANTIES WITH REGARD TO THIS SOFTWARE, INCLUDING ALL IMPLIED WARRANTIES OF MERCHANTABILITY AND FITNESS. IN NO EVENT SHALL CMU BE LIABLE FOR ANY SPECIAL, INDIRECT, OR CONSEQUENTIAL DAMAGES OR ANY DAMAGES WHATSOEVER RESULTING FROM LOSS OF USE, DATA, OR PROFITS, WHETHER IN AN ACTION OF CONTRACT, NEGLIGENCE, OR OTHER TORTIOUS ACTION, ARISING OUT OF OR IN CONNECTION WITH THE USE OR PERFORMANCE OF THIS SOFTWARE.

Copyright © 2000 Cayman Systems, Inc.
All rights reserved.
Printed in the United States of America.

To Use Your Cayman 3220-H-W11 Documentation

Your Cayman 3220-H-W11 software includes a comprehensive on-line user manual that has been designed to help you understand and use your Cayman 3220-H-W11. To access the Cayman 3220-H-W11 manual, run Adobe Acrobat Reader and open the **3220hw_ug.pdf** file. The Cayman 3220-H-W11 Installer typically puts the **3220hw_ug.pdf** file in the **C:\Program Files\Cayman Installer** directory on your personal computer. You will also find a set of Frequently Asked Question (FAQs) included in the **FAQ** directory on the Cayman installation CD-ROM.

To Contact Cayman Technical Services

If the Cayman 3220-H-W11 documentation does not provide answers to your questions, you can use Cayman's extensive Technical Services resources.

Use one of the following services:

- Web: <http://www.cayman.com/support/>
- FAQs: <http://www.cayman.com/faq.html> or open the FAQ documents stored on the **FAQ** directory of the Cayman installation CD-ROM.
- Email: support@cayman.com
- Voice: 978-262-1700 (Monday through Friday, 9AM-5PM EST)
- FAX: 978 667-4404

Configuring Your Cayman 3220-H-W11

To configure the Cayman 3220-H-W11, you need a computer on the same wireless or Ethernet network as the Cayman 3220-H-W11. Refer to the *Configuring Your Computer* brochure for information on how to set up your computer to configure your 3220-H-W.

1. Determine whether your Internet Service Provider (ISP) has supplied you with a Configuration Worksheet identifying the settings you are to use when configuring your Cayman 3220-H-W11.

- If you received a Configuration Worksheet, refer to it when configuring your Cayman 3220-H-W11.
- If you did not receive a Configuration Worksheet, your Cayman 3220-H-W11 has already been configured, and no action on your part is needed. You can skip this section or perform the steps to review your Cayman 3220-H-W11 configuration.

2. Run a Web browser application, such as Netscape Navigator or Microsoft Internet Explorer, from the computer on the same local area network as the Cayman 3220-H-W11.

3. Open a session to your Cayman 3220-H-W11.

Enter <http://cayman-dsl>. (including the final period) or <http://192.168.1.254> in the *Location* text box. The browser displays the Cayman 3220-H-W11 QuickStart window.

If your Configuration Worksheet tells you to use an IP address other than 192.168.1.254 to log in, enter <http://ip-address>.

4. Transfer the contents of each field on the Configuration Worksheet to the corresponding field in the QuickStart window.

Enter the system name, wireless network ID, and your login name and password in the QuickStart window. By default, the wireless network ID is the string "Cayman-DSL" followed by the device's serial number; for example, *Cayman-DSL1650001*. You will need to configure your laptops and other devices with this wireless network ID if you want them to connect to the Cayman 3220-H-W11 over a wireless network link.

5. If you changed any of the fields in the QuickStart window, click the Save button to save the modified Cayman 3220-H-W11 configuration. When you see the Cayman 3220-H-W11 Home page, click the Restart Cayman-DSL button to restart your Cayman 3220-H-W11 with its new configuration settings.

Introduction

Your Cayman 3220-H-W11 connects the personal computers, printers, and other network devices in a workgroup to a remote network or the Internet. Your Cayman 3220-H-W11 functions include the following:

- A **wireless bridge** that interoperates with 802.11 wireless networking devices, including wireless networking cards designed for laptop computers.
- An **integrated four-port Ethernet hub** on the Cayman 3220-H-W11 front panel that lets you add or move workgroup network connections quickly and easily.
- An **Asymmetric Digital Subscriber Line (ADSL) modem** that supports downstream throughput of as much as eight megabits per second.
- An **auto-configuring Internet router** that incorporates Cayman's Swift-IP™ technology.

Cayman 3220-H-W11 features include the following:

- **Asynchronous Transfer Mode (ATM)** supports up to eight simultaneous virtual circuits (VCs) for reliable high-speed data transmission.
- **Full-featured wide area network bridge** supports wide range of non-TCP/IP protocols.
- **Web-based browser configuration** makes configuration and management easy from anywhere on your network. **Command-line configuration** lets you monitor the Cayman 3220-H-W11 through a Telnet or VT100 connection.
- **Network Address Translation (NAT)** lets your workgroup network share one IP address when communicating with other hosts on your corporate network or the Internet.
- **IP pinholes** let you provide web services from your Local Area Network without sacrificing network security.
- **Interoperability with DSL Access Multiplexors (DSLAMs)** from Alcatel and other major vendors.
- **Enhanced security features**, including restrictions on administrative access to the router over its WAN port, broadcast filtering to prevent denial-of-service attacks, and rejection of packets with "spoofed" IP addresses.

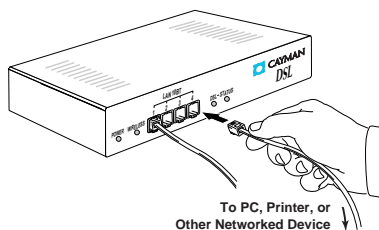
Setting Up Your Cayman 3220-H-W11

1. Unpack your Cayman 3220-H-W11 shipping carton.

In addition to this QuickStart, you should have the Cayman 3220-H-W11, a power transformer, two DSL data cables (green and blue), an installation CD-ROM that contains your Cayman 3220-H-W11 operating software and documentation.

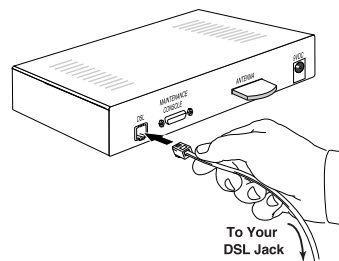
2. Connect the Cayman 3220-H-W11 to the devices on your Ethernet network.

Connect each computer or other device to a hub port on the front of the Cayman 3220-H-W11 with a twisted-pair Ethernet cable (maximum length 100 meters).

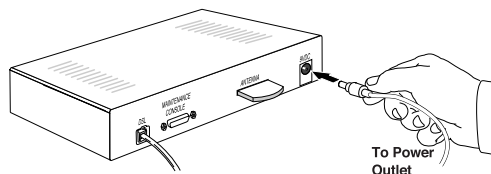


3. Connect the Cayman 3220-H-W11 to your DSL network.

Insert one end of the green DSL cable in the DSL port on the Cayman 3220-H-W11 back panel until you feel it lock. Insert the other end of the DSL cable into the telephone jack connected to your ADSL service. If, after you power on your Cayman 3220-H-W11, the DSL LED on the front panel does not come on steadily, replace the green DSL cable with the blue DSL cable.



4. Connect the power transformer to the power jack on the Cayman 3220-H-W11 back panel. Plug the power transformer into an appropriate electrical outlet.



Note: At this point, your Cayman 3220-H-W11 is completely functional. Because the operating software for your Cayman 3220-H-W11 is installed during factory verification, you do not need to run the Cayman 3220-H-W11 installer utility before using the device. You only need to run the installer utility if you receive a software update for your Cayman 3220-H-W11 or if you are advised to reinstall the device's operating software by Cayman Technical Services.

Configuring Your Computer

The following instructions assume that you want to use the automatic configuration and address sharing features of the Cayman 3220-H-W11 to provide IP information to devices on your local Ethernet network. If your workgroup network must use another network number or has other special configuration requirements, refer to the Cayman 3220-H-W11 documentation for information on how to configure your Cayman 3220-H-W11.

1. Configure your computer to use an IP address on the same TCP/IP network as the Cayman 3220-H-W11.

• Windows 95/Windows 98/Windows NT

- 1 Open the Network Control Panel and select the TCP/IP service for the Ethernet card in your computer (for example, TCP/IP ->3Com EtherLink III).
- 2 Open the Properties window.
- 3 Click the *Gateways* tab, and remove any installed gateways.
- 4 Click the *DNS Configuration* tab, and disable DNS.
- 5 Click the *IP Address* tab, and click the *Obtain an IP Address Automatically* option button.
- 6 Click *OK* to save the modified TCP/IP settings.

• Macintosh – If your Macintosh uses Open Transport, open the TCP/IP Control Panel and choose *Connect via Ethernet*. Pull down the User Mode menu and choose *Advanced*. Choose *Configure Using DHCP Server* and enter the IP address of the Cayman 3220-H-W11 (192.168.1.254) in the *Name Server Address* text box.

If your Macintosh uses MacTCP, open the MacTCP Control Panel and select the Ethernet interface icon. Enter 192.168.1.x (where x is any number in the range 1-253) in the *IP Address* text field. Click the *More* button. Click the *Obtain Address Manually* radio button. Enter 192.168.1.254 in the *Gateway Address* text field. Pull down the *Class* dropdown list and choose C, which sets your subnet mask to 255.255.255.0. In the *Domain Name Server Information* fields, enter your Internet Service Provider's domain name in the *Domain* text field and enter 192.168.1.254 in the *IP Address* text field.

2. Restart your computer.

After you restart your computer, your Cayman 3220-H-W11 automatically configures the computer's network settings so that you can connect to the Internet.

3. Configure each computer that will use the Cayman 3220-H-W11's address sharing feature to use DHCP, as described in Step 1, above.

Configure devices that will not use address sharing with static IP addresses on the same network as the Cayman 3220-H-W11. Restart each device after you have updated its TCP/IP configuration.